



June 2020 Newsletter

**STAY
ALERT**

**CONTROL
THE VIRUS**

**SAVE
LIVES**

New Members

In stark contrast to recent seasons, May and June saw the addition of no new members. It's not that there's no interest in the club, to the contrary but adding to our number is of no help to the efforts of our launch volunteers at this time.

Renewals are Closed

It turned into a marathon this season but renewals are pretty much done and dusted, save for securing the return of a few outstanding sets of club keys.

It was the intention to list all leavers in this issue but suffice to say, in having to operate under what at times have been arduous social distancing rules, we have welcomed the space and spare capacity their departure freed up.

Over to Members Now

In December last, Secretary Mike Waddington reported that the club's trustees had signed new leases. We can at long last report that new 20-year leases for both the Main and South compounds are now in place.

May/June

Full lockdown, on it went, day after day of ridiculously settled weather ideal for trailed craft owners with the odd blow thrown in for kites.



Cruelly it turned out to be the sunniest month of May on record, but on Saturday 23rd the compounds, if not the clubhouse, re-opened. Our kites were first to take advantage of the relaxation but the weather again settled allowing trailed craft to get afloat most weekends.



Havhingsten Fibre Optic Cable

The Wayleave agreement between Blackpool Council, Aquacomms and the club trustees is also now in place. Works in the South Compound, in preparation for the new cable coming ashore later this year was completed last week.

Our New Season

Who could have guessed what 2020 held in store? No going back, no time to plan. Within just days of lockdown, what had been a remarkably successful 2019/20 season ended. Fortunately, the club was in a strong position to weather the gathering storm.

Sadly, we lost members at renewal. But every cloud as they say, because by Autumn 2019, we were nearing full capacity and it has since suited us to operate with reduced numbers, without guest introductions and without the addition of any new members in these strange and socially distanced times.

Our priority remains, the protection and safety of our members. We are operating with what we have and our launch volunteers Craig, John, Paul, Pete and Trudy each deserve huge thanks for giving up their leisure time to get as many members as possible afloat.

We revisit our risk assessments when relaxations to the emergency rules permit. Though they may only be minor, adjustments to the way we appropriate will be made when we consider appropriate and in time we will pick up the slack and new and returning member entrance fees will once again be a welcome addition to subscription income. Meantime the numbers on our waiting list continues to grow.

Who Can Currently be Aboard Your Craft?

On Thursday 11 June, the Department for Environment, Food & Rural Affairs (DEFRA) published guidance on inland and coastal boating on behalf of the UK government.

'You should only use a leisure, recreation, sport or pleasure boat with people from the same household unit or those in your support bubble'.

The bubbles are aimed at helping people who live alone and have struggled with a lack of human interaction since lockdown began.

A support bubble can be created between any adult living alone or single parent living with children under the age of 18 and one other household.

This limits the people on board any craft, both inland and at sea, to only members of the same household/bubble.

Works to the Clubhouse

With leases safely now in place the club can move forward with capital investment in the clubhouse and the long-awaited works to failing structural steelwork.

The committee have accepted estimates for the works from local firm Kennerley Construction. Work within the garages and on replacing balcony supports is scheduled to commence 14 December.

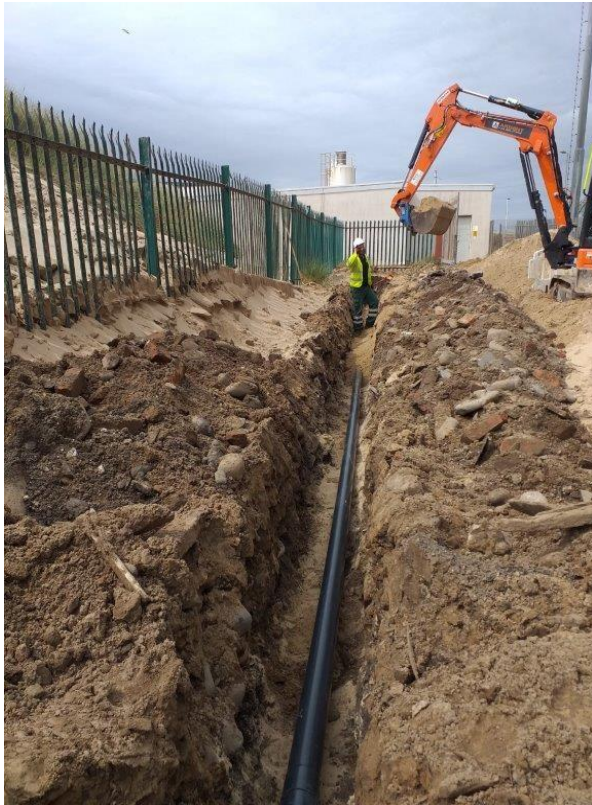
Havingsten Cable Conduit Installation in South Compound



Ditch-Witch rig arrives on site



Chamber pit excavation



Excavation of trench and laying of duct



Drilling under the dunes commences



Marking of bore towards duct beach pit



Duct punches out on beach



Duct pipe installation commences



Duct connection chamber construction



Connection chamber installed with duct-entry points



Duct man-hole cover installed



Site restoration